

ArmaKleen Technical Service Report Summary

Cleaning Trial Type: Aqueous

Industry: Paint and adhesive production

Segment: 34 – Mfg – Non-metal (Plastic, Rubber, Glass)

Soil: Uncured Lonseal #650 Two Part Component, Solvent Free Exopy Part B, MAPEI® Ultrabond® G17 Part B, Lonseal #650 Two-Component Solvent Free Epoxy Part A & Part B as well as MAPEI® Ultrabond® G17 Part A & Part B (Conductive Epoxy Flooring Adhesive)

Substrate: stainless steel

Description of Part(s): an assortment of stainless steel caps, connectors and piping parts

Customer objective: The customer was looking to improve their cleaning performance, automate their cleaning process and reduce their cleaning costs.

Cleaner used: 10% by volume solution of ArmaKleen™ M-301

Machine used: Spray Washer (JRI TL3, JRI FL250, JRI FL500, Better Engineering G-2000)

Temperature used: 160°F

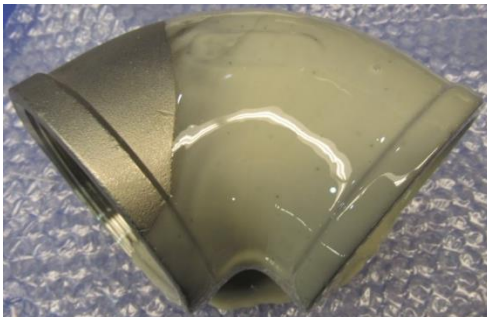
Time required:

- 15 minutes - 1 hour (uncured Lonseal #650 Two Part Component, Solvent Free Exopy Part B and MAPEI® Ultrabond® G17 Part B)
- 2 – 4 hours (Lonseal #650 Two-Component Solvent Free Epoxy Part A & Part B, MAPEI® Ultrabond® G17 Part A & Part B)

Post Cleaning: Fresh rinse followed by air pressure drying

Recommendation to Customer: The ArmaKleen Technical Center recommends using a 10% by volume solution of ArmaKleen™ M-301 at 160°F in a Spray Washer for a minimum of 15 minutes to 1 hour (uncured) or a minimum of 2 hours to 4 hours.

Before Picture



After Picture



Source: TSR #17-A-081